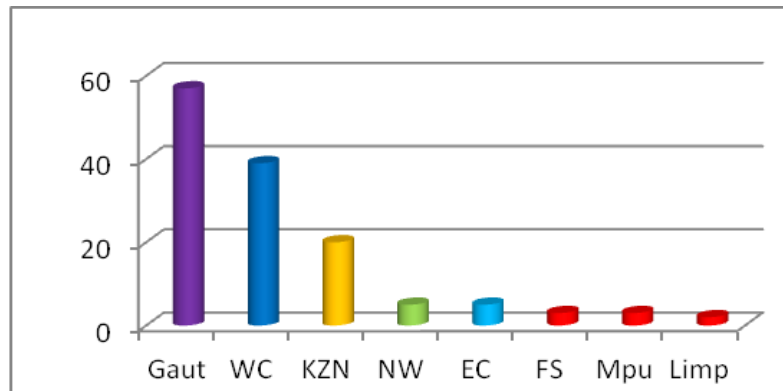


Membership profile 2011

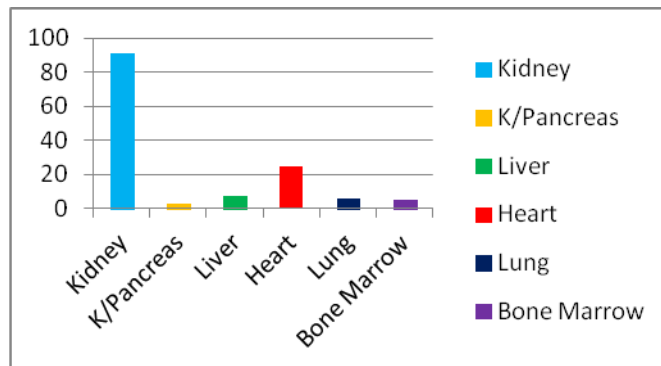
According to our database on 31st October, we had 232 members of which 137 are Full members (transplantees) and 95 are Associate members (family, friends, professional persons). This is an increase of 39 members during 2011. The Male/Female distribution indicates a 66% and 34% representation.

With regard to membership per region, the following needs to be highlighted:

- For the first time since the early days of TGASA, the Gauteng region (including Mphumalanga and Limpopo, surpassed the Western Cape in membership numbers;
- The membership numbers of the KZN Region stayed stable;
- Eastern Cape had a 100% increase from 5 to 10 members;
- Free State and North West Region also increased their membership by 90% to 21.

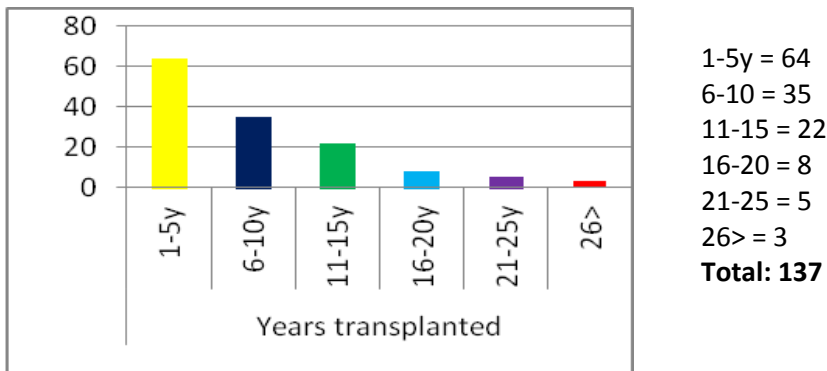


Most of our members received kidney transplants with heart transplants in the second place.

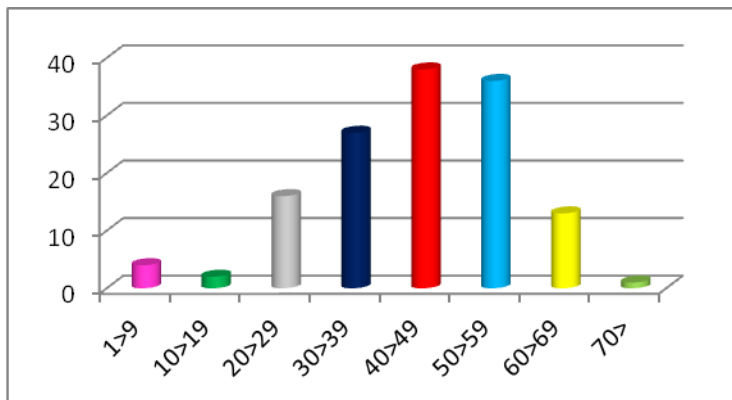


Kidney: 91
 Hearts: 25
 Liver: 7
 Lung: 6
 Bone Marrow: 5
Total: 137

We are fortunate to mostly attract newly transplanted athletes having received their transplants within the past 5 years or within the past 6-10 years. Fortunately we also have the role models in Abdul Kathrada and Paul Thesen who have been transplanted more than 30 years ago!



The age group distribution of athletes who participated in the 2011 World Transplant Games, indicate that most of our athletes fall within the 40-59 age group. There is however a tendency since the 2009 WTG that the average age of our athletes is increasing. We are excited about the fact that for the first time ever, we have four junior athletes under the age of 12 years and SATSA thanks the Kidney Beanz Trust for their support and encouragement of these junior athletes.



What do all of these statistics tell us?

Firstly, we need to recruit more athletes in all of our regions, and secondly that we need to encourage young transplantees to join us. **SATSA's goal is to enter at least 70 athletes to participate in the WTG 2013 in Durban!!!**

This is where we need your help!!!

Become part of the **“one-to-one” membership drive**. If each current member could encourage one other transplantee to become a member, we can double our membership and become one of the leading “special” sports groups in South Africa.

**HEILIE UYS
NATIONAL SECRETARY SATSA**

21ST NOVEMBER 2011